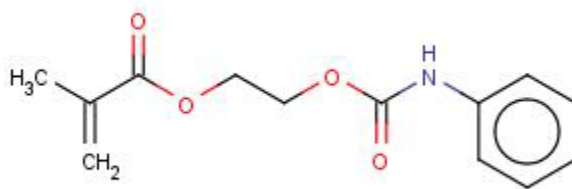




Technical Data Sheet



Cymer MAPU MEP (-2)

2-Methacryloxyethyl phenyl urethane
2- Propenoic acid, 2-methyl-, 2- [[(phenylamino)carbonyl]oxy]ethyl ester
2-(Methacryloyloxy)ethyl phenylcarbamate
MEP (2-)

Chemical Formula: C₁₃H₁₅ N O₄

CAS: [51727-47-0]

MW: 249.2

Analysis

Melting Point
ppm MEHQ
% MAPU
% PIC
% HEMA
pH
% Volatiles
Polymer
Appearance

Specifications

50°C Min.
100-250 ppm
Report (typically 99.5% or higher)
Report (typically not detected)
Report (typically less than 0.1%)
4.0 – 7.0
1% Max
Must not be Present
White uniform powder crystals free from foreign matter

Approved By

Bud LaMonica
Technical Manager